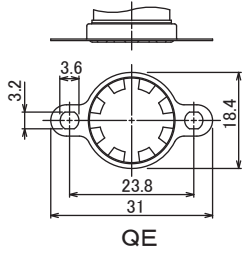


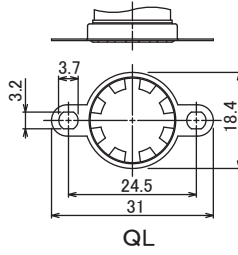
Movable bracket (FREE)

Aluminum (t 0.4) cover
Stainless (t 0.3) bracket



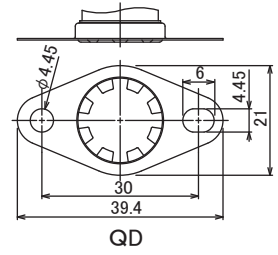
QE

Aluminum (t 0.4) cover
Stainless (t 0.3) bracket



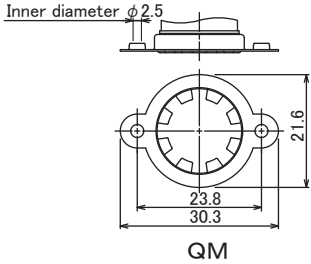
QL

Aluminum (t 0.4) cover
Stainless (t 0.3) bracket



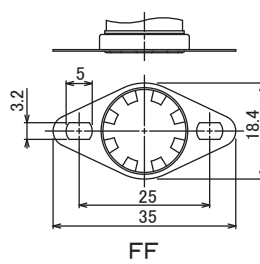
QD

Aluminum (t 0.4) cover
Iron (t 0.3) Chromate plating bracket



QM

Stainless (t 0.25) cover
Stainless (t 0.3) bracket

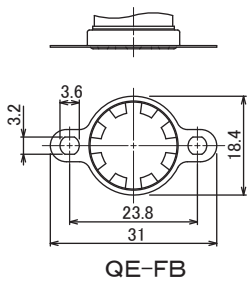


FF

The combination of US-622•621•625 is not allowed

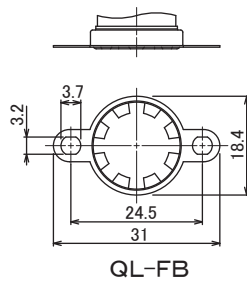
Fixed bracket (FIXED)

Aluminum (t 0.4) cover
Stainless (t 0.3) bracket



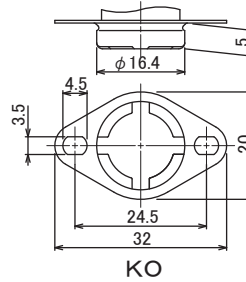
QE-FB

Aluminum (t 0.4) cover
Stainless (t 0.3) bracket



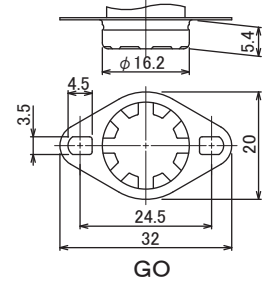
QL-FB

Aluminum (t 0.5) Buried bracket



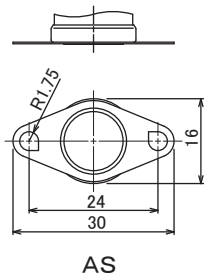
KO

Aluminum (t 0.4) Buried bracket



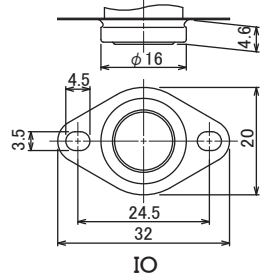
GO

Stainless (t 0.2) cover
Stainless (t 0.3) bracket



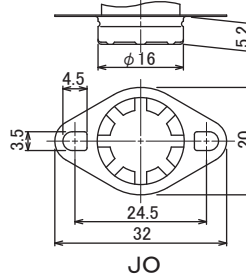
AS

Stainless (t 0.25) Buried bracket



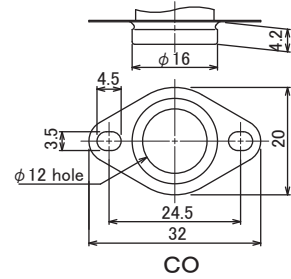
IO

Stainless (t 0.25) Buried bracket



JO

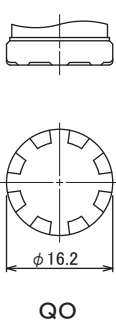
Stainless (t 0.25) with hole Buried bracket



CO

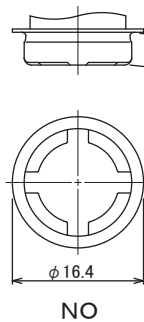
No bracket

Aluminum (t 0.4) cover



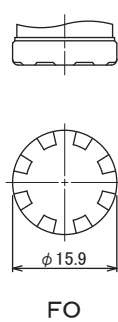
QO

Aluminum (t 0.5) cover



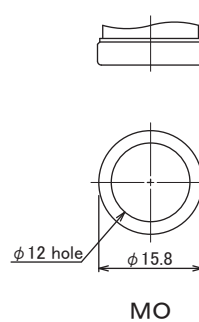
NO

Stainless (t 0.25) cover



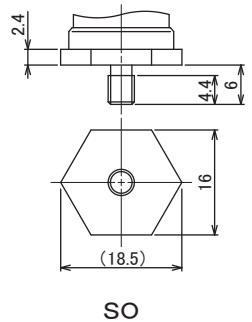
FO

Stainless (t 0.25) cover



MO

With brass screws cover



SO